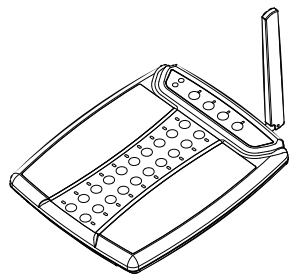




Operating Instructions Staff paging transmitter



Model No. ATX-01

Contents:

Introduction	P2
Warranty Policy	P3
Safety precautions	P3
Use Precautions	P3
Accessories Confirmation	P4
Unit parts and functions	P5
System installations	P7
Basic operations	P8
Advance operations	P9
Programming pagers	P10
Troubleshooting	P11
Specifications	P11

Introduction:

Thank you for purchasing ARCT ATX-01 Transmitter. This operating instruction is for ARCT ATX-01 Transmitter. Before connecting and operating pager, please read following instructions completely, and save this manual for future use.



Model: ATX-01
FCC ID: 2ADKH-ATM1U10

Here by, we declare that this ATX-01 is in compliance with Part 90 of the FCC Rules and essential requirements and other relevant provisions of directive 1999/5/EC. Operation is subject to the following two conditions:

- (1) This device may not cause harmful interference,
- (2) This device must accept any interference received, including interference that may cause undesired operation.

Warranty Policy:

The warranty period is 18 months of service time from date of invoice.
(For further warranty period, please contact your distributor or dealer)

Note:

The following damages are not covered by the warranty, including dropping, water contact or any other wrong use, other than the purpose designed for.

Safety precautions:

To prevent severe injury and loss of life/property, read this section carefully before using the unit to ensure proper and safe operation of your unit.

The section explains the graphic symbols used in this manual.

WARNING Denotes a potential hazard that could result in serious injury or death.

Transmitter :ATX-01

WARNING

- **Do not use this equipment close to automatic control equipment like automatic door fire alarm and so on.**
Radio waves from this equipment may cause the trouble by a malfunction for medical equipment or automatic equipment.
- **Use only the specified AC adaptor with this product.**
Using unspecified AC adaptor, may cause smoke or fire.
- **Do not touch AC adaptor and power cable during lighting storms.**
There is the risk of electric shock.
- **Do not pull or insert the power plug with wet hands.**
Failure using may cause electric shock.
- **Do not exceed the ratings of AC outlet and wirings, and connect the AC adaptor only within 110~240V AC.**
Exceeding the rating may result in overheating and fire.
- **Do no attempt to disassemble or modify this product.**
Failure using may cause fire or electric shock.

Use Precautions:

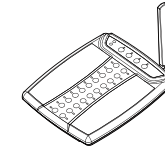
Read the following instructions to use this product correctly.

- **Staff paging transmitter:**
 - Do not open or modify the main unit case.
- **Operation environment and service place:**
 - Do not leave this product in a place exposed to high temperature or excessive dust.
 - Do not put this product where static is likely to be generated or where magnetism generating devices such as TV set and radio are nearby.
 - Do not leave this product under direct sunshine or at excessive high or low temperatures of long time.
 - Protect this product from rain or water
 - Mounting the antenna near any large metal objects will minimize the operation range.
- **How to maintain the device:**
 - Be sure to turn off the power before maintenance.
 - Use a dry soft cloth to remove dirt from this product. When stubborn stains are observed, use a tightly twisted water soaked cloth to wipe the point softly and use dry another cloth to wipe the point again.
 - Do not use thinner, benzene, wax, kerosene, polish, hot water, chemical cloth and the like.
 - The dirty connector may cause communication failure.

Accessories Confirmation:

Before using, examine the following accessories.
If there missing any items, please contact your dealer.

Main unit:



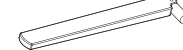
5V/2A power adaptor



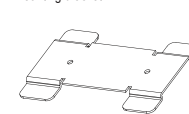
Dry-Erase Maker



Antenna



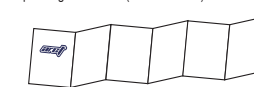
Mounting bracket



Self-tapping screws x2pcs



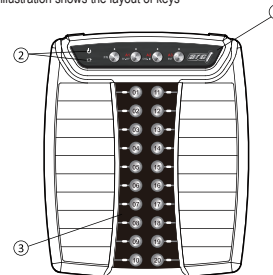
Operating instructions(this document)



Names of parts and their functions

Main unit(front side)

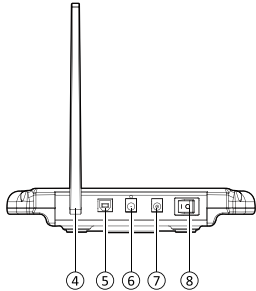
The following illustration shows the layout of keys



No	Name	Details
1	Function panel:	Fn: function key A1/SP-OFF: Alert type 1/ Staff pager off(Fn+SP-OFF)※1 A2/CHG-ID: Alert type 2/Change ID(Fn+CHG-ID+#※2)※1 A3/ENT: Alert type 3/ ENT key
2	Indicator	During operation: (PWR 符號):Light red: Power on (TX 符號): Light green: TX signal is sent.
3	Number keys	Each number key is assigned to a staff pager

※ 1 : Staff pager off & Change ID functions both are the Over-the-Air (OTA) command.

※ 2 : “#” is the pager ID number

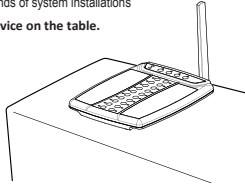


No	Name	Details
4	ANTENNA	SMA jack for 450~470MHz antenna
5	USB JACK	Used to update the parameter values of the transmitter and communications with PC
6	DC OUT	Export out 5V DC for charging cradle
7	DC IN	5V/2A DC input
8	PWR SW	Power switch

System Installations

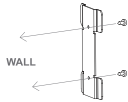
System installations:
There are two kinds of system installations

1. Place the device on the table.



2. Mounted on the wall.

1. Fix the bracket on the wall with two self-tapping screws



2. Slide the ATX-01 into the bracket.

3. Finished



Basic Settings:

How to use the staff paging transmitter.

The ATX-01 Factory defaults are most commonly used settings (Alert mode =1)Paging

For pagers number 1-20:

1. Press the pager number on the key-panel of ATX-01.
2. The ATX-01 will automatically send a page to staff pager each 60 seconds (Resend interval) until the number key has been pressed again.

For pagers numbered 21 or higher:

1. Press Fn
2. Enter the pager number(01-09 and 10(zero))
3. Press ENT

When a page is received:

Staff pagers- will flash, beep and vibration.

Alert type settings:

Setting the alert mode

The system provides one-key replace the alert type functions, user can choose different alert mode by selecting A1, A2, A3.

1. Select alert mode:
2. Press A1, A2 or A3

Advanced operations

All call page

If all pagers need to be called at once,

1. Press Fn
2. Enter the number "999"(default value = 999, this number could be assign to any number between 0~999 by programming setting)
3. Press the ENT

When all call paging is received:

Staff pagers- will flash, beep and vibration (programmable)

Range test

Test the staff paging transmitter coverage.

1. Press Fn
2. Enter the number "998"(default value = 998)
3. Press the ENT

The transmitter's No. 1 led will light red, then sending a page to the pager numbered 1 each 10 seconds until the No. 1button is pressed

Enable Out of Range

Enable Out of range function

1. Press Fn
2. Enter the number "997"(default value = 997)
3. Press the ENT

When Disable out of range command paging is received:

The Staff pager will beep two time then return back to charging mode

Turn of staff pagers

If all pagers need to be turn off at once,

1. Press Fn
2. Enter A1/SP-OFF
3. Press the ENT

When staffpager turn off command※3 paging is received:

Staff pagers- will turn off all of states LED then into sleep mode.

※3 : Staff pagers may receive the Over-the-Air (OTA) shutdown command only in charging mode.

Programming pagers

If a new staff pager number needs to be assigned to a pager, staff pager can be reprogrammed from the ATX-01 transmitter.

Program Staff pager's ID number:

Be sure the staff pager is into programming mode-the pager's indicator LED – Green and Red LED will alternate blinking.※4

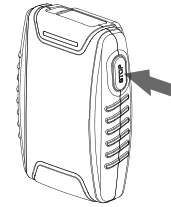
The system support OTA to change Pager's ID.

1. Press Fn
2. Press A2/CHG-ID
3. Enter #(# = Pager ID number)
4. Press ENT

When Change ID command paging is received:

The Staff pager will beep one time then return back to charging mode

※4 : How does the staff pager into programming mode:
Press the "stop" key then put the staff pager into charger.
Release the stop key until the pager into programming mode.



Troubleshooting

Symptom	Check items and solutions
Keypad cannot indicate anything even after a key is pressed	<ul style="list-style-type: none">● Check the power supply plug is securely connected to the ATX-01, then restart the ATX-01● If the power light is on, it could be a problem with the ATX-01 transmitter, please contact yourdistributor or dealer for assistance
The ATX-01 keypad operates normally, but the pager does not receive the page	<ul style="list-style-type: none">● Restart the ATX-01.● Confirm the pager whether the operation is in the same system code.(Perform the "programming pagers" procedure)● Make sure that is one particular pager is not able to receive a page or also cannot receive other staff pagers.● If all of staff pager does not receive the page, please contact yourdistributor or dealer for assistance

Specifications

ATX-01 Transmitter

Item	Specifications
Frequency	440~460MHz
Baud rate:	1200 bps
Modulation type	FSK
Output power	1Watt
Maximum Dev.	+/- 2.5K
Channel Spacing	12.5K
Harmonic Radiation	Less -25dBm
Frequency stability	2ppm at -10℃ ~+60℃
Output connector	SMA(F)
Alert tone volume	80dBa @10cm
Current consumption	Standby: 10mA ; Transmit: 600mA
Power supply	5V/2A adapter
Operating temperature	-10℃ ~+60℃
Operating humidity	20% RH to 80% RH(no condensation)
Dimension	Approx. 252mmx 210mmx 35 mm
Weight	Approx.475g
Certification	FC CE